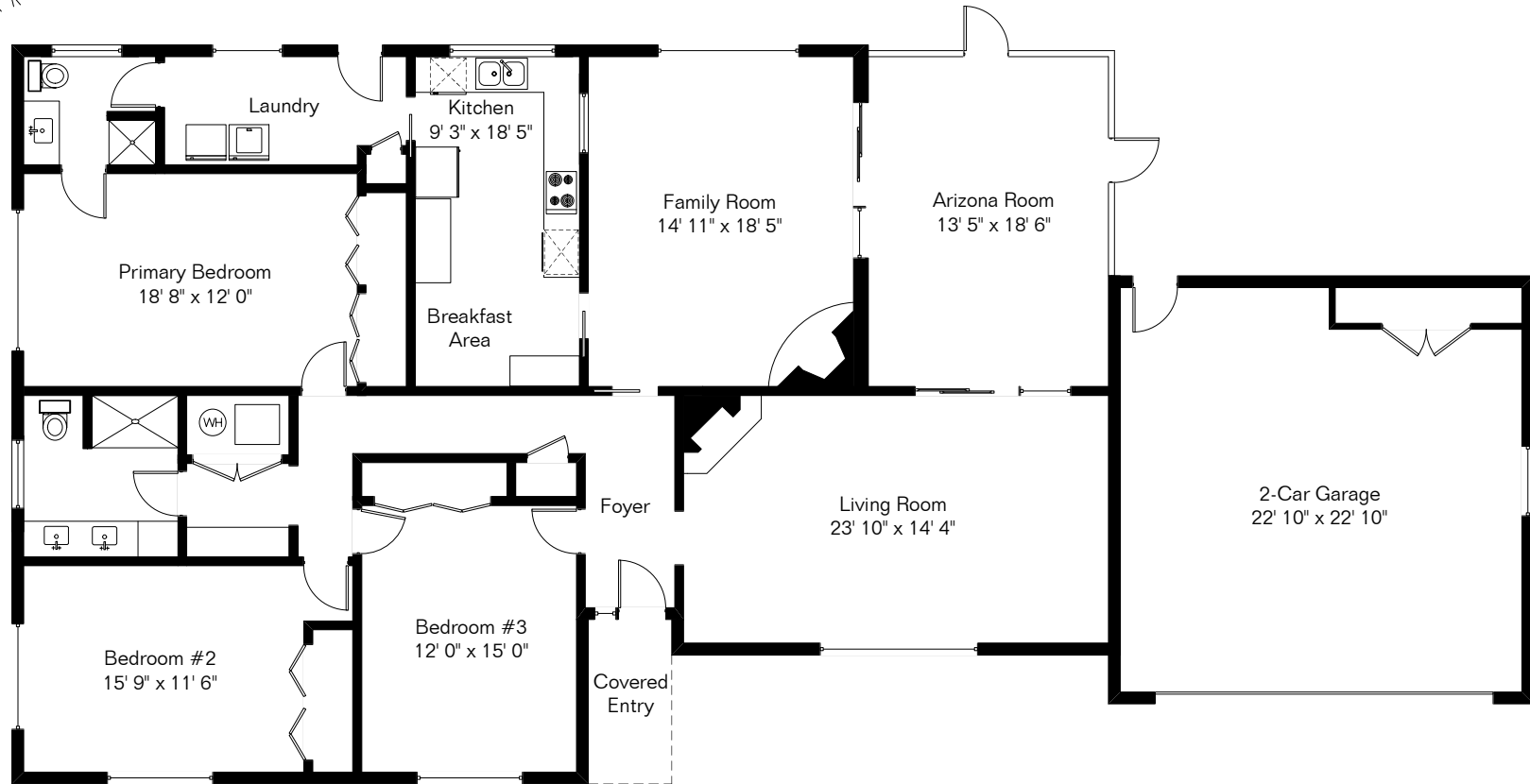


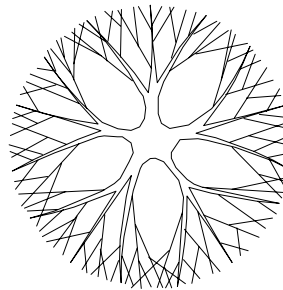
The square footages and room size information are deemed to be reliable but are not guaranteed and should be independently verified. This drawing is for marketing purposes only.

# 9745 N Calle Loma Linda

Presented by Pam Treece  
Long Realty Company  
(520) 275-2664



Living Area 2,094 Sq Ft  
Arizona Room 259 Sq Ft  
Garage 566 Sq Ft



Site Visit June 2025

0 ft. 6 ft. 10 ft. 20 ft.



Copyright 2025 Floor Plans First! LLC  
All Rights Reserved.

Floor Plans First! LLC  
See the Floor Plan First!  
FloorPlansFirst.com™  
(520) 881-1500